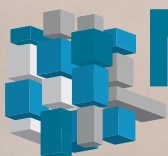
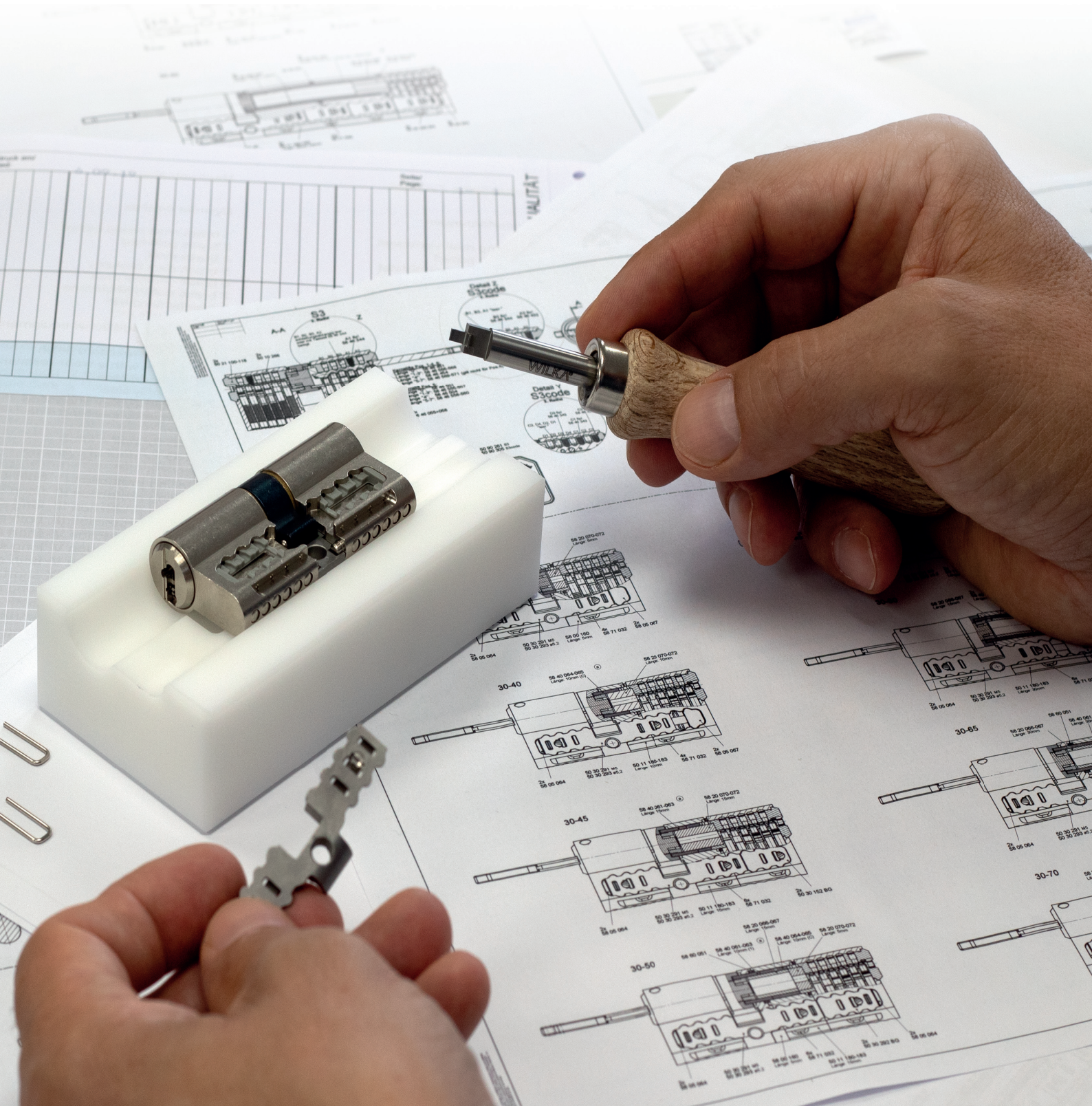


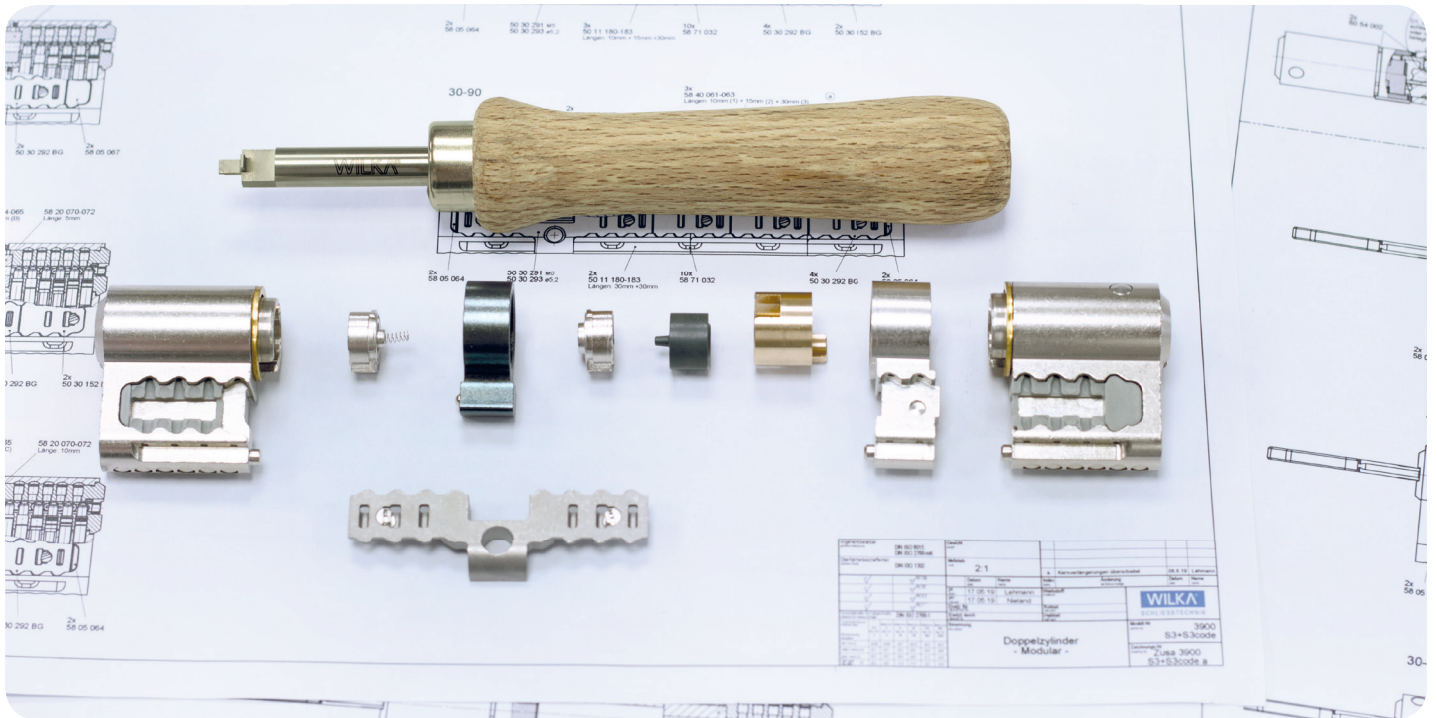
WILKA - VORSPRUNG DURCH QUALITÄT

**WILKA**<sup>®</sup>  
SCHLIESSTECHNIK



**MODULAR**

Few parts, many variants



## Modular – At a glance

- Available in all systems
- Available in individual parts, as service cylinder or completely assembled
- Available as WILKA's own keying system or as customer keyway
- Increased extraction protection as standard
- Maximum extraction protection via optional drilling protection
- Basic length 30/30 to 90/90 mm
- Available as double cylinder and knob cylinder
- Surface: matt nickel-plated

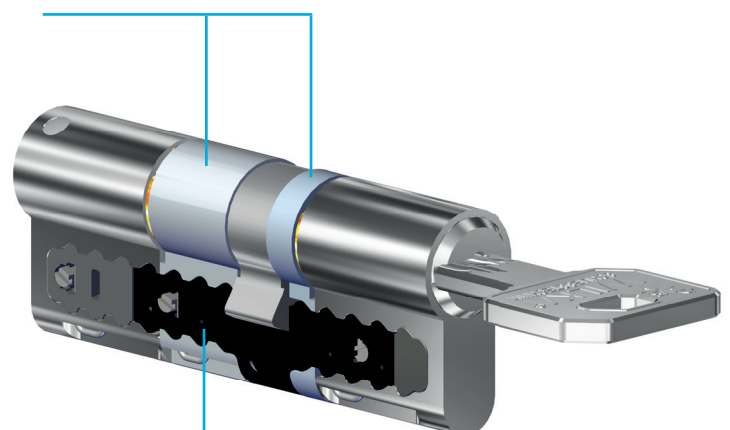
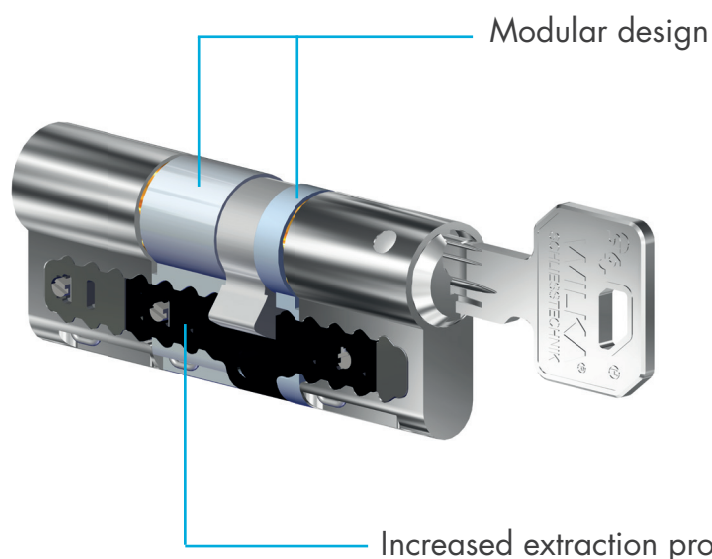


Image: SINUS Carat S1 extension 45/35

Image: SINUS Carat S3 extension 45/35



- **Maximum flexibility**
- **Very simple length adjustment**
- **Extraction protection as standard**

## Few parts, many variants

Whether for a short-term emergency opening, service calls or a new locking system – the cylinder length is not always known in advance. The practical modular system from WILKA is the ideal solution. All modular versions of the WILKA systems can be flexibly adapted to local conditions. Thus, each cylinder length is practically ready to hand.

The cylinder can be converted to the desired length in **only a few steps**. The basic length of 30/30 mm can be extended in 5 mm increments on both sides up to a cylinder length of 90/90 mm. Only four different bridge parts are required. The modular bridge of stainless steel achieves **additional extraction protection** of the cylinder.

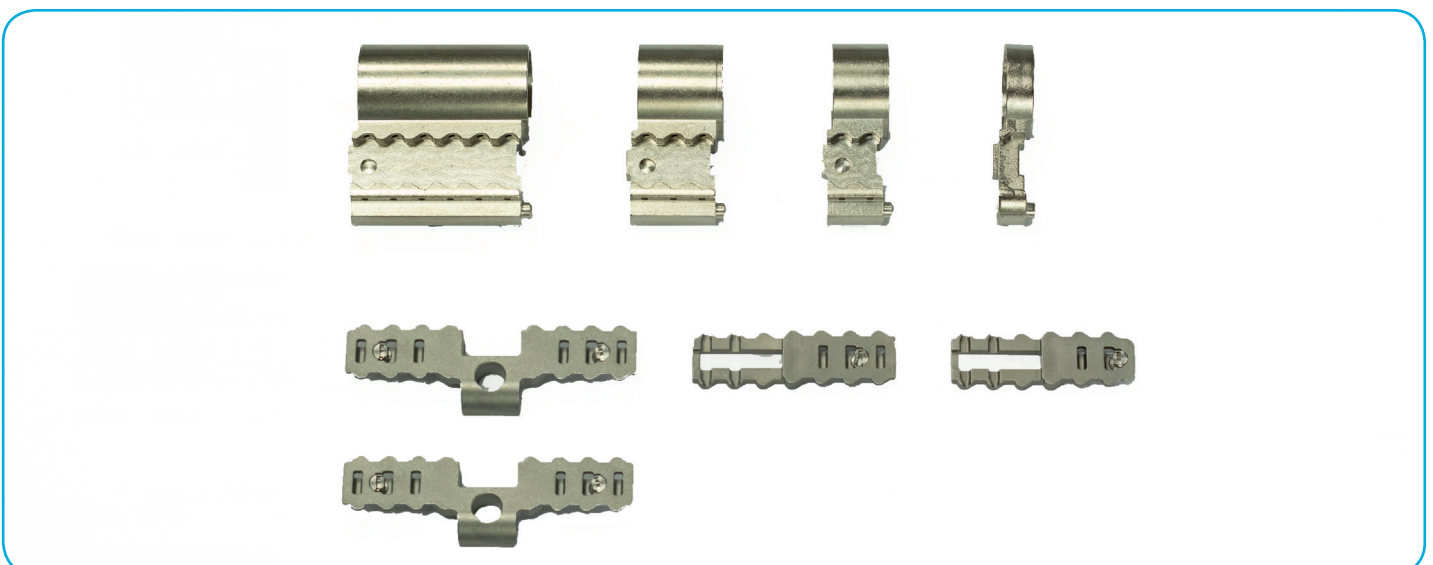
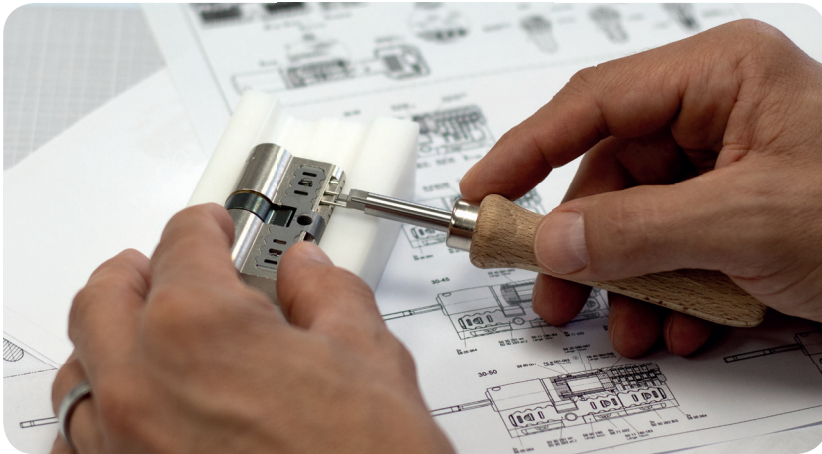


Image: All cylinder lengths can be implemented with just four different bridge parts and housing extensions.

## Maximum protection in a few simple steps



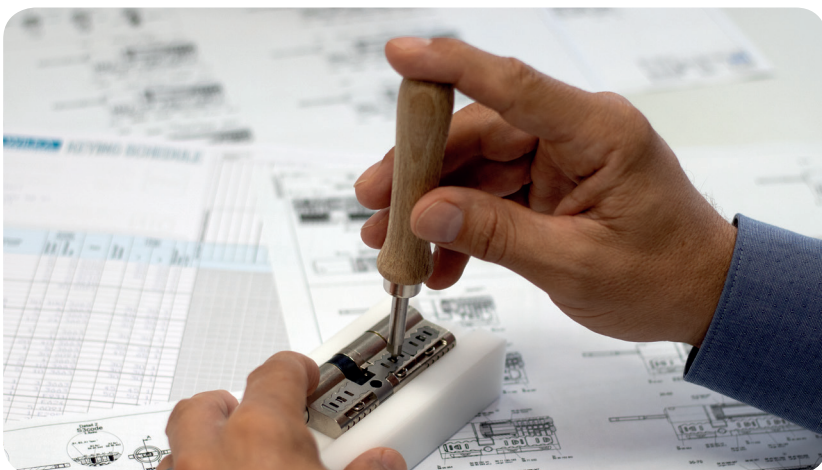
### Disassembly

Using the multi-tool, turn the screw slot to the vertical position, then remove the clamps.



### Length adjustment

Adjust the cylinder with housing, core and coupling extension to the desired length. Insert the coupling, cam and bridge parts.



### Assembly

Insert the clamps and rotate the screws to a 70 degree position.



### **WILKA Schließtechnik GmbH**

📍 Mettmanner Str. 58-64 · 42549 Velbert

☎ +49 2051 2081-0

📠 +49 2051 2081-151

✉ info@wilka.de · www.wilka.de · www.wilka.com