

WILKA - VORSPRUNG DURCH QUALITÄT

WILKA®
SCHLIESSTECHNIK

Product overview

Emergency exit door locks



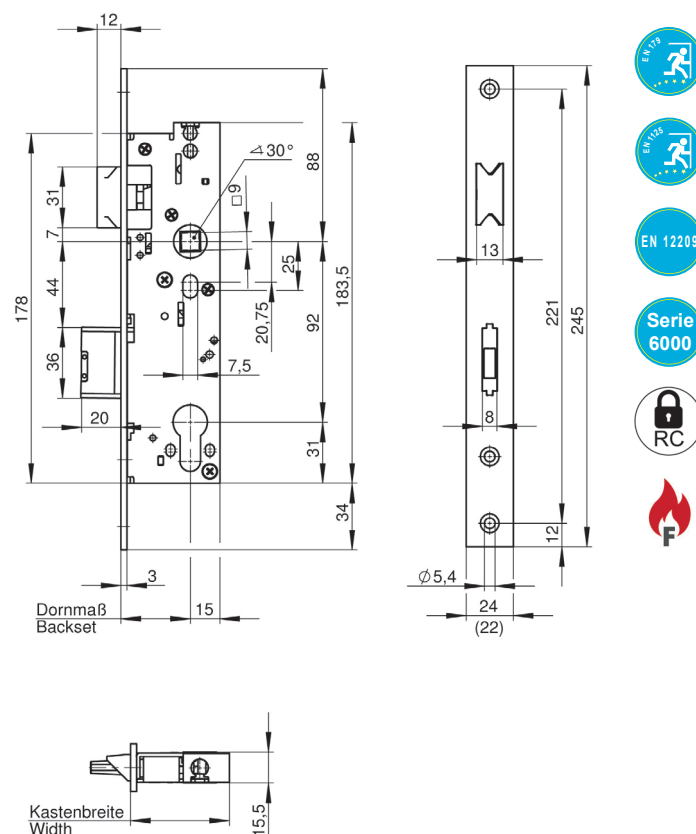
6000 Emergency exit door mortise lock



Art. 6667



Art. 667Z
for top shoot bolt



Your ADVANTAGE+ with WILKA

- + Many emergency exit combinations possible for single and double-leaf doors
- + Synergy effects due to cross-series accessories of series 6000 and 7000
- + Individual usage options of series 6000 and 7000 due to lock cases with a uniform milling image
- + Low stock-keeping requirements due to uniform striking plates and inactive leaves of series 6000 and 7000
- + Flexible use even in special profile situations due to optionally extended latch and deadbolts
- + Flexible use in the narrowest profiles (15 mm rear backset)
- + Use of all conventional knob and electronic cylinders possible, e.g. WILKA easy 2.0 or other WILKA electronic solutions
- + Suitability of the series 6000 for the Swiss market, too, as the locks can be preconfigured for Swiss round cylinders

Product features

- For single and double-leaf metal frame doors
- Available in the well-known emergency exit functions E, B & D
- Optional set up for additional top shoot bolt, for use in high doors
- Optional available with controlled latch bolt stop (emergency exit function E)
- Optional monitoring packages (deadbolt and / or follower monitoring device)
- Optional available with a renovation forend (380 mm)
- Uniform milling images within the series 7000

Technical details

- Backsets: 30, 35, 40, 45 mm
- Rear backset: 15 mm
- Dead bolt throw: 20 mm
- Distance: 92 mm
- Forend lengths: 245, 270 and 380 mm
- Forend widths: 22 or 24 mm / flat or U-shaped forend
- Certified according to EN 179, EN 1125 and EN 12209
- Smoke and fire protection in accordance with EN 1634
- RC tested according to DIN EN 1627-1630 in combination with door elements

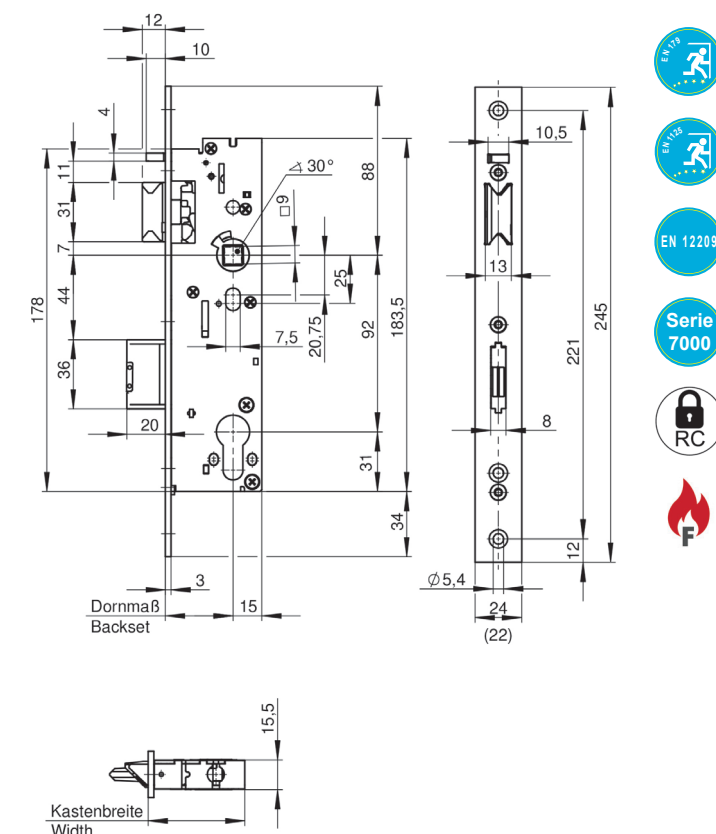
7000 Self-locking emergency exit door mortise lock



Art. 7667



Art. 767Z
for top shoot bolt



Your ADVANTAGE+ with WILKA

- + Many emergency exit combinations possible for single and double-leaf doors
- + Synergy effects due to cross-series accessories of series 6000 and 7000
- + Individual usage options of series 6000 and 7000 due to lock cases with a uniform milling image
- + Low stock-keeping requirements due to uniform striking plates and inactive leaves of series 6000 and 7000
- + High level of comfort due to manipulation-proof self-locking where it is enough to simply pull the door shut and active locking is not required
- + For the triggering of self-locking, there are no extra trigger mechanisms or special striking plates needed
- + Reduced wear and tear due to deactivation of self-locking in emergency exit function B as soon as the external handle is activated
- + Flexible use in the narrowest profiles (15 mm rear backset)
- + Use of all conventional knob and electronic cylinders possible, e.g. WILKA easy 2.0 or other WILKA electronic solutions

Product features

- For single and double-leaf metal frame doors
- Available in the well-known emergency exit functions E, B & C
- Optional set up for additional top shoot bolt, for use in high doors
- Optional available with controlled latch bolt stop (emergency exit function E)
- Optional monitoring packages (deadbolt and / or follower monitoring device)
- Optional available with a renovation forend (380 mm)
- Uniform milling images within the series 6000

Technical details

- Backsets: 30, 35, 40, 45 mm
- Rear backset: 15 mm
- Dead bolt throw: 20 mm
- Distance: 92 mm
- Forend lengths: 245, 270 and 380 mm
- Forend widths: 22 or 24 mm / flat or U-shaped forend
- Certified according to EN 179, EN 1125 and EN 12209
- Smoke and fire protection in accordance with EN 1634
- RC tested according to DIN EN 1627-1630 in combination with door elements

8600 Key-operated multi-point lock with emergency exit function

Your ADVANTAGE+ with WILKA

- + Many emergency exit combinations possible for single and double-leaf doors
- + Synergy effects due to cross-series individual parts use of series 8600 and 8700
- + Small dimensions of the main and additional lock cases ensure problem-free exchange or retrofitting
- + FZG cylinder is not needed in the main lock without gearbox
- + Flexible use even in special profile situations due to optionally extended latch and deadbolts

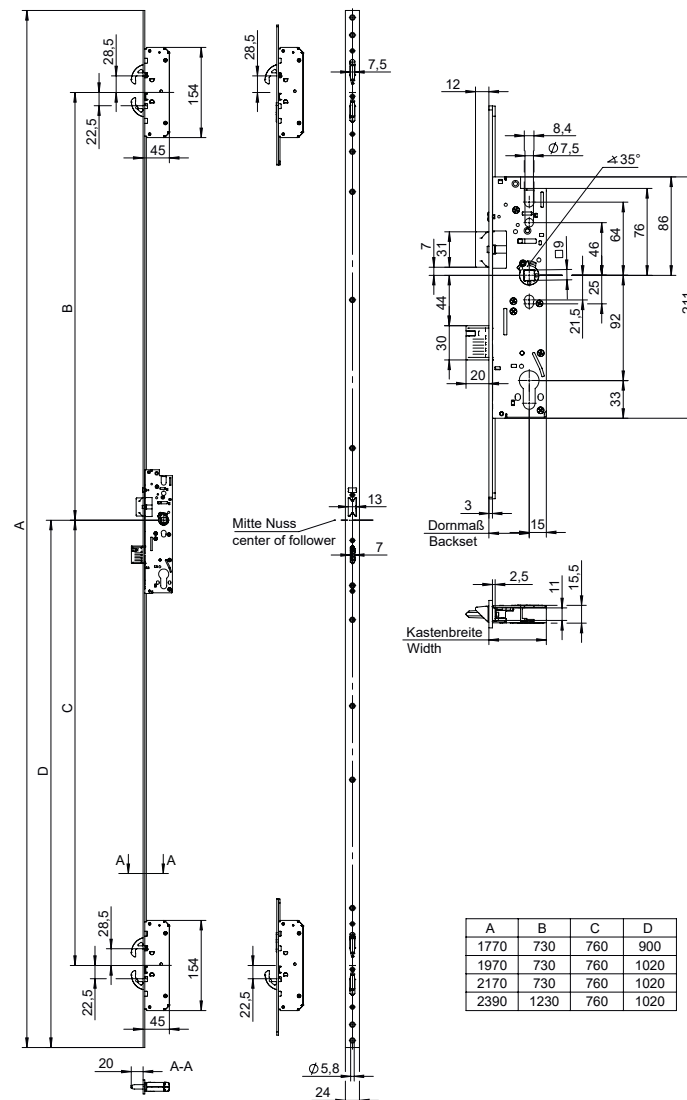
Technical details

- Backsets: 35, 40, 45 mm
- Rear backset: 15 mm
- Forend lengths: 1770, 1970, 2170 and 2400 mm
- Forend widths: 22 or 24 mm / flat or U-shaped forend
- Distance between the secondary sash and the frame parts: 2 to 7 mm
- Authorised for emergency exits in accordance with EN 179 and EN 1125
- Smoke and fire protection in accordance with EN 1634
- RC tested according to DIN EN 1627-1630 in combination with door elements



Product features

- For single and double-leaf metal frame doors
- Available in the well-known emergency exit functions E, B & D
- Flexibility due to different locking components
- Setting of emergency exit side (outwards / inwards) possible in all emergency exit functions
- Reversible latch bolts (DIN L / R) in all emergency exit functions
- Uniform milling images within the series 8000
- Profile cylinder preparation or Swiss round cylinder can be chosen
- Optional available with controlled latch bolt stop
- Optional monitoring packages (deadbolt and / or follower monitoring device)
- Optional additional locking point 86ZN for use in high doors



8700 Self-locking multi-point lock with emergency exit function

Your ADVANTAGE+ with WILKA

- + Many emergency exit combinations possible for single and double-leaf doors
- + Synergy effects due to cross-series individual parts use of series 8600 and 8700
- + High level of comfort due to manipulation-proof self-locking where it is enough to simply pull the door shut and active locking is not required
- + Manipulation-proof locking sequence control in the main lock, which also locks additional locks
- + Small dimensions of the main and additional lock cases ensure problem-free exchange or retrofitting

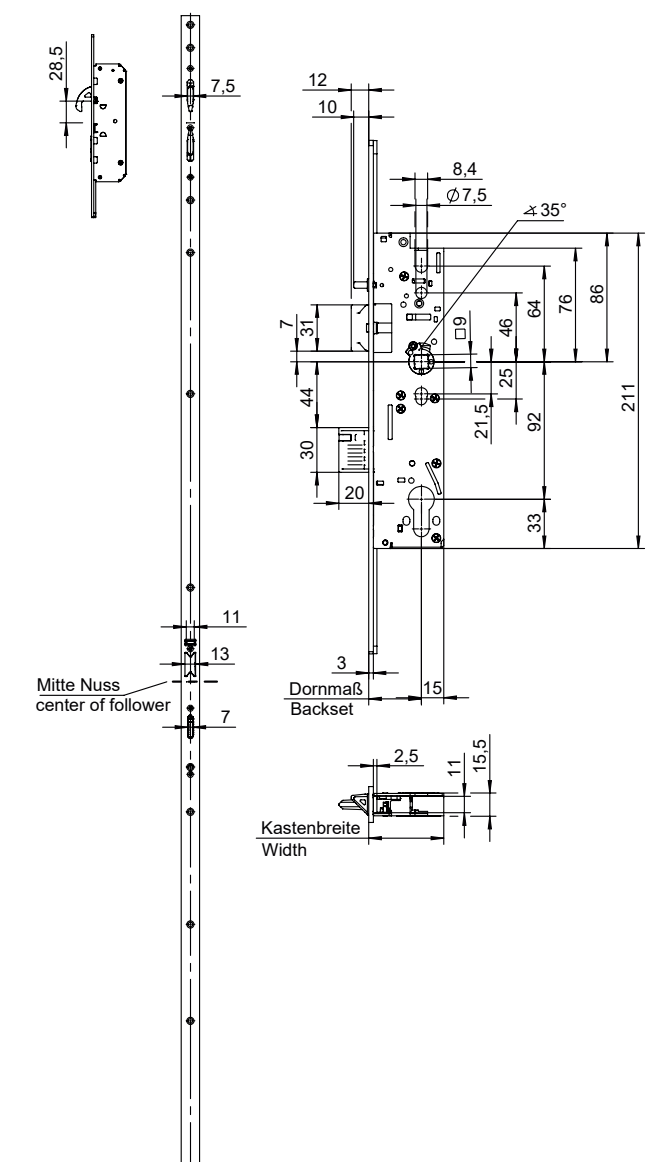
Technical details

- Backsets: 35, 40, 45 mm
- Rear backset: 15 mm
- Forend lengths: 1770, 1970, 2170 and 2400 mm
- Forend widths: 22 or 24 mm / flat or U-shaped forend
- Distance between the secondary sash and the frame parts: 2 to 7 mm
- Authorised for emergency exits in accordance with EN 179 and EN 1125
- Smoke and fire protection in accordance with EN 1634
- RC tested according to DIN EN 1627-1630 in combination with door elements



Product features

- For single and double-leaf metal frame doors
- Available in the well-known emergency exit functions E, B & C
- Flexibility due to different locking components
- Setting of emergency exit side (outwards / inwards) possible in all emergency exit functions
- Reversible latch bolts (DIN L / R) in all emergency exit functions
- Uniform milling images within the series 8000
- Profile cylinder preparation or Swiss round cylinder can be chosen
- Optional available with controlled latch bolt stop
- The series 8700 can be fitted with an A-opener (emergency exit function E)
- Optional monitoring packages (deadbolt and / or follower monitoring device)
- Optional additional locking point 87ZN for use in high doors



A retrofittable A-opener offers a low-cost alternative to a motorised lock and enables the automatic, motorised unlocking of the door in seconds.

87AO A-opener | Motorised unlocking of the **self-locking** multi-point lock



Product features

- Motorised unlocking with fast-reaction motor
- Flexible retrofitting

Your **ADVANTAGE+** with WILKA

- + Flexible and low-cost alternative to a motorised lock enables automatic, motorised unlocking of the door in seconds with access control

Technical details

- Cable included (6 m)
- Short "open" signal tone that can be switched off
- Day function (permanently unlocked function)
- Dimensions: 200 x 47 x 15.5 mm
- Switching voltage: $24 \pm 10\%$ VDC
- Power supply: Min. 1 to max. 41 [A]
- Operating temperature: -20°C to $+60^{\circ}\text{C}$
- Protection type in accordance with DIN 60529: IP 42
- Tested for CE conformity in accordance with 2014/30/EC: EN 61000-6-1 (interference resistance), EN 61000-6-3 (radio interference suppression), EN 62368-1 (device safety)

87AN Emergency power buffering for motorised unlocking of **self-locking** multi-point lock



Product features

- Retrofittable emergency power buffering enables use in fire protection doors

Your **ADVANTAGE+** with WILKA

- + Additional security in the event of a power outage

Technical details

- Emergency power buffering cable permanently installed
- Emergency power buffering dimensions: 71 x 47 x 15.5 mm
- Dimensions of A-opener incl. emergency power buffering: 271 x 47 x 15.5 mm
- Switching voltage: $24 \pm 10\%$ VDC
- Power supply: Min. 1 to max. 41 [A]
- Operating temperature: -20°C to $+60^{\circ}\text{C}$
- Protection type in accordance with DIN 60529: IP 44
- Tested for CE conformity in accordance with 2014/30/EC: EN 61000-6-1 (interference resistance), EN 61000-6-3 (radio interference suppression), EN 62368-1 (device safety)

Perfect combination of safety and comfort

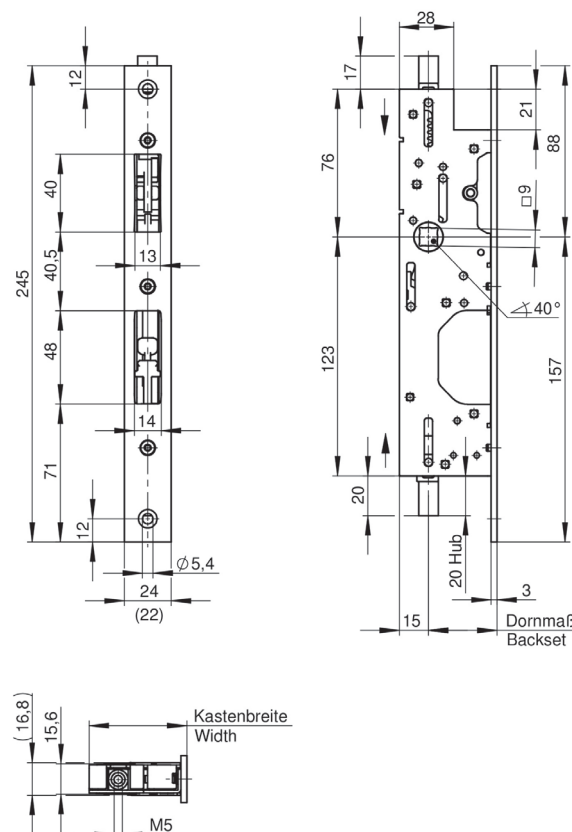
Through its **series 8000** WILKA has rounded off its product range and is now a complete provider with respect to metal frames (aluminium and steel) for single and multi-point locks on single and double-leaf emergency exits.



7663 / 7664 Emergency exit lock case for inactive leaf series 6000, 7000



Art. 7663 / 7664



Your ADVANTAGE+ with WILKA

- + Use of active leaf locks of series 6000 and 7000
- + Synergy effects due to cross-series accessories of series 6000 and 7000
- + Small dimensions of the lock case ensure problem-free exchange or retrofitting
- + Flexible use in the narrowest profiles (15 mm rear backset)
- + Can also be combined with fittings with a 45° angle of rotation

Product features

- Lower drive lock (Art. 7663)
- Lower and upper drive lock (Art. 7664)
- Can be combined with reverse action lock 661U (Art. 7663)
- Optional available with a lipped forend
- Optional monitoring packages (deadbolt and / or follower monitoring device)

Technical details

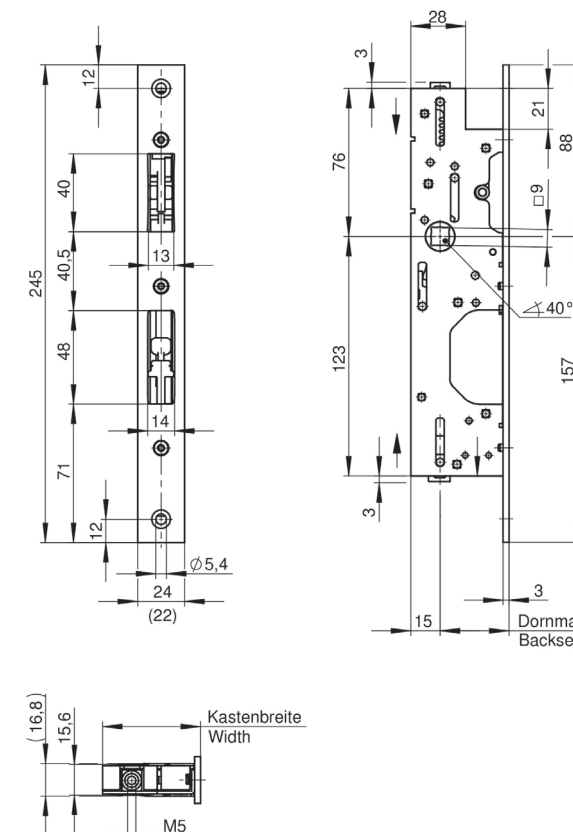
- Backsets: 30 - 85 mm
- Rear backset: 15 mm
- Forend lengths: 245 and 270 mm
- Forend widths: 22 or 24 mm / flat or U-shaped forend
- Connector thread: M5
- Angle of rotation of the follower: 40°
- Rod stroke: 20 mm
- Authorised for emergency exits in accordance with EN 179 and EN 1125
- Smoke and fire protection in accordance with EN 1634
- RC tested according to DIN EN 1627 - 1630 in combination with door elements

Function: When actuating a handle or a push bar / touch bar, the shoot bolts of the inactive leaf lock case are retracted. The latch bolt and deadbolt of the active leaf are pushed back at the same time. When the inactive leaf is returned to the locked position, the switching lock 4685 automatically triggers the independent locking of the top and bottom shoot bolts. The door can only be closed after this locking action.

8663 / 8664 Emergency exit lock case for inactive leaf series 8600, 8700



Art. 8663 / 8664



Your ADVANTAGE+ with WILKA

- + Use of active leaf locks of series 8600 and 8700
- + Synergy effects due to cross-series accessories of series 8600 and 8700
- + Small dimensions of the lock case ensure problem-free exchange or retrofitting
- + Flexible use in the narrowest profiles (15 mm rear backset)
- + Can also be combined with fittings with a 45° angle of rotation

Product features

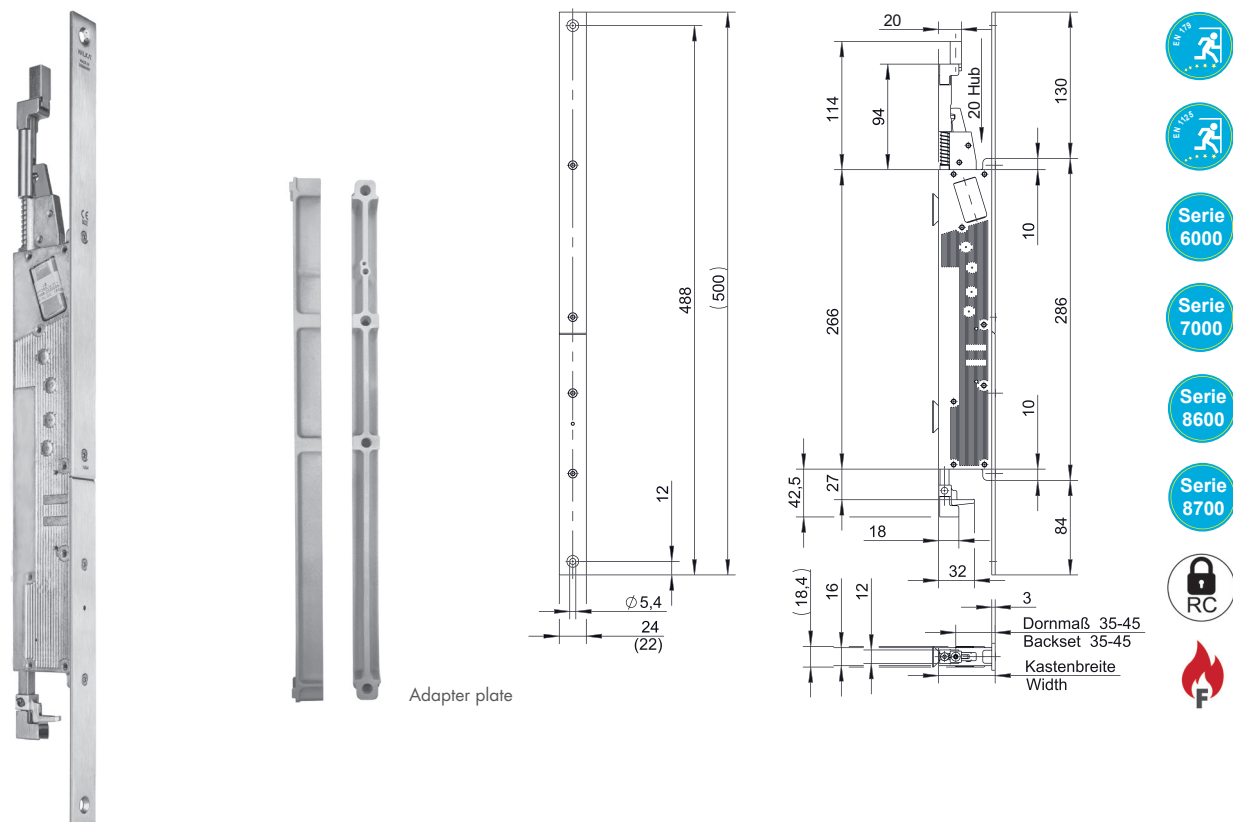
- Lower drive lock (Art. 8663)
- Lower and upper drive lock (Art. 8664)
- Can be combined with reverse action lock 661U (Art. 8663)
- Optional available with a lipped forend
- Optional monitoring packages (deadbolt and / or follower monitoring device)

Technical details

- Backsets: 30 - 85 mm
- Rear backset: 15 mm
- Forend lengths: 245 and 270 mm
- Forend widths: 22 or 24 mm / flat or U-shaped forend
- Connector thread: M5
- Angle of rotation of the follower: 40°
- Rod stroke: 20 mm
- Authorised for emergency exits in accordance with EN 179 and EN 1125
- Smoke and fire protection in accordance with EN 1634
- RC tested according to DIN EN 1627 - 1630 in combination with door elements

Function: When actuating a handle or a push bar / touch bar, the shoot bolts of the inactive leaf lock case are retracted. The latch bolt and deadbolt of the active leaf are pushed back at the same time. When the inactive leaf is returned to the locked position, the switching lock 4685 automatically triggers the independent locking of the top and bottom shoot bolts. The door can only be closed after this locking action.

765M Motorised module series 6000, 7000, 8600, 8700



Your **ADVANTAGE+** with WILKA

- + Use of active leaf locks of series 6000, 7000, 8600 and 8700
- + Door opening in less than a second due to a fast-reaction motor
- + Increased burglary resistance as the lower shoot bolt can be retained even in the case of automatic drive
- + No energy storage device is necessary in the event of a power outage
- + Power supply only necessary for the inactive leaf
- + Narrow lock case (15.5 mm), meaning that U-shaped forends of 22 mm are also possible
- + Easy installation due to three-part forends
- + Synergy effects due to cross-series accessories of series 6000, 7000, 8600 and 8700

Product features

- Functional unit in interplay with Art. 7665 / 8665
- Upper drive lock
- Control unit integrated into motorised module
- Control of swing door drives and integration into building management
- E-opener function, i. e. the inactive leaf remains locked and the active leaf is opened
- Single and double-leaf operation possible as well as permanently unlocked function

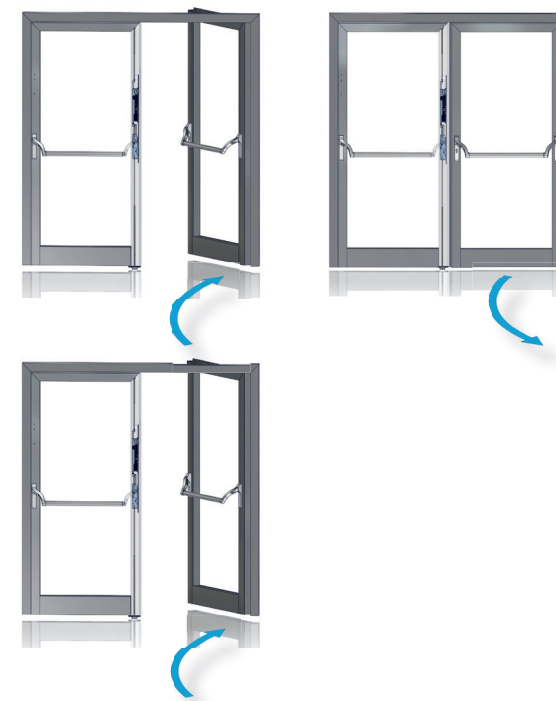
Technical details

- Connection cable included (10 m)
- Backsets: 35 - 85 mm
- Width of lock case: 50 - 95 mm
- Depth of lock case: 50 mm
- Forend length: 500 mm
- Forend widths: 22 or 24 mm / flat or U-shaped forend
- Connector thread: M5
- Rod stroke: 20 mm
- Authorised for emergency exits in accordance with EN 179 and EN 1125
- Smoke and fire protection in accordance with EN 1634
- RC tested according to DIN EN 1627 - 1630 in combination with door elements

See the product video here:



Functional description



Single-leaf – automatic

Active leaf

The active leaf unlatches and opens automatically while the inactive leaf remains closed.

Single-leaf – permanently unlocked

Active leaf

The active leaf is unlatched over a long term while the inactive-leaf remains closed.



Continuously energised



No fire and smoke protection authorisation

Function: Following impulse for **single-leaf** doors: Both the lower and the upper bolt remain closed, while the ejectors are simultaneously activated and the inactive leaf is released. In the event of a power outage, no energy storage device is required. Mechanical components take over the locking process of the door element and guide doors into the prescribed locking position.



Double-leaf – automatic

Active and inactive leaf

Both the active leaf and the inactive leaf are automatically unlocked and locked. The closing sequence control determines the locking process of the door elements, ensuring that the doors are locked as required.

Double-leaf – permanently unlocked

Active and inactive leaf

Both the active leaf and the inactive leaf are automatically unlocked and remain permanently unlocked.



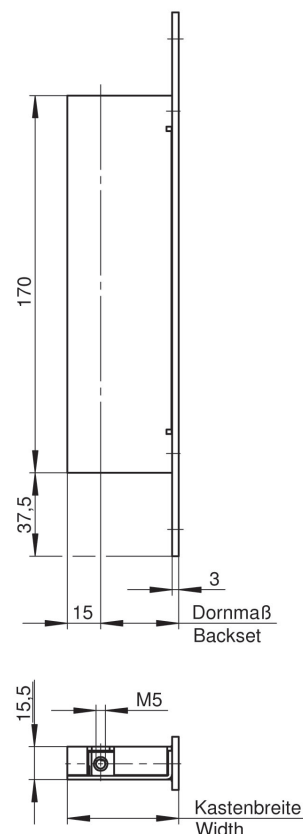
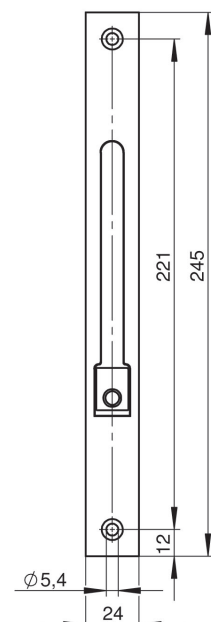
Continuously energised



No fire and smoke protection authorisation

Function: Following impulse for **double-leaf** doors: The lower and upper bolts are retracted, triggering the release of the inactive leaf. In the inactive leaf lock case, ejectors push back the latch bolt and deadbolt, unlocking an additional top shoot bolt.

6672 Espagnolette series 6000, 7000, 8600 and 8700



Serie
6000

Serie
7000

Serie
8600

Serie
8700



Your **ADVANTAGE+** with WILKA

- + Use of single parts across series 6000, 7000, 8600 and 8700
- + High level of convenience due to automatic locking
- + Flexible use in the narrowest profiles (15 mm rear backset)
- + Comfortable operation of the trigger lever due to ergonomic design
- + Soft door closure

Product characteristics

- For the automatic locking of inactive leaves
- Lower and upper drive lock

Technical details

- Backsets: 30 - 65 mm
- Rear backset: 15 mm
- Forend lengths: 245 and 270 mm
- Forend widths: 22 or 24 mm / flat or U-shaped forend
- Connector thread: M5
- Rod stroke: 20 mm
- Smoke and fire protection in accordance with EN 1634

Function: Activation of the lever integrated into the forend causes the espagnolette bolts to retract into the espagnolette lock. After the lever has been released the spring loaded bolts shoot out of the espagnolette lock and the lever returns to its flush position within the forend.

Striking plates



P641

Striking plate for emergency exits
Dimensions: 24 x 3 x 245 mm



P643

U-striking plate for emergency exits
Dimensions: 24 x 6 x 245 mm



P679

Lipped striking plate for emergency exits
Dimensions: 24 x 3 x 245 mm



P672

E-opener striking plate for emergency exits
Dimensions: 24 x 3 x 245 mm



P697

E-opener U-striking plate for emergency exits
Dimensions: 24 x 6 x 245 mm



P691

E-opener lipped striking plate for emergency exits
Dimensions: 24 x 3 x 245 mm



P880

Striking plate for the secondary locks of series 8600 and 8700
Dimensions: 24 x 3 x 200 mm



P880

U-striking plate for the secondary locks of series 8600 and 8700
Dimensions: 24 x 6 x 200 mm



P676

E-opener striking plate prepared for top shoot bolt
Dimensions: 24 x 3 x 120 mm



P694

E-opener striking plate prepared for top shoot bolt
Dimensions: 24 x 3 x 120 mm



P645

Lipped striking plate prepared for top shoot bolt
Dimensions: 24 x 3 x 60 mm



P612

Lipped striking plate prepared for top shoot bolt
Dimensions: 24 x 3 x 60 mm

Accessories



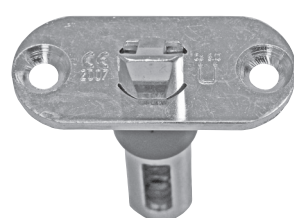
4685

Switching lock
Forend: 24 x 54 mm



4686

Snap lock
Forend: 24 x 54 mm



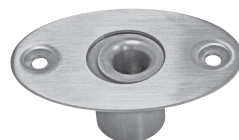
4687

Spring-loaded snap lock
Forend: 24 x 54 mm



9651

Floor keep



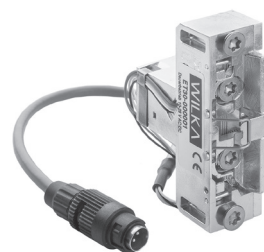
9652

Adjustable floor sleeves
Adjustment range: 3 mm



9656

Adjustable floor sleeves
Adjustment range: 2 mm



ET30

E-opener without latch bolt guide



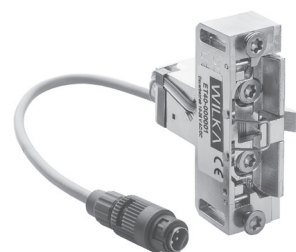
9647

Solid shoot bolt for inactive leaf
Lengths: 950 and 1420 mm



9648

Hollow shoot bolt for
inactive leaf
Lengths: 1000, 1500, 2000
and 2500 mm



ET40

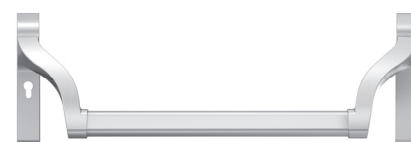
E-opener with latch bolt guide



9650

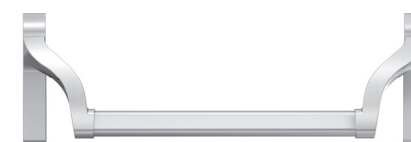
Hollow shoot bolt for active leaf
Lengths: 1400, 1900 and 2400 mm

Fittings



4906

Emergency exit push bar for active leaf locks
prepared for profile cylinder



4907

Emergency exit push bar for inactive leaf locks



4904

Emergency exit push bar for active leaf locks



4905

Emergency exit push bar for inactive leaf locks



4921

Touch bar for active leaf locks or inactive
leaf locks



4910

Lever handle half-set



4911

Lever handle half-set



4912

Lever handle half-set



4913

Knob half-set



4914

Oval rose

W I L K A - V O R S P R U N G D U R C H Q U A L I T Ä T



Your corporate stamp
Your address here



WILKA Schließtechnik GmbH

📍 Mettmanner Str. 58-64 · 42549 Velbert · Germany

☎ +49 2051 2081-0

📠 +49 2051 2081-151

info@wilka.de · www.wilka.de · www.wilka.com