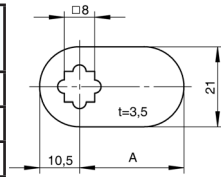


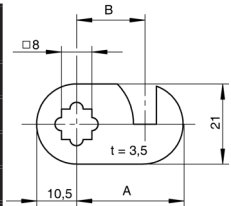
Schließhebel für Art. Nr. 1250

Levers for Art. No. 1250

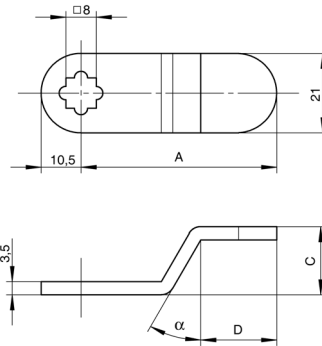
Zeichnungs - Nr. Drawing - No.	Maß A Measure A
50 62 002	19,5mm
50 62 001	27,5mm
50 62 004	35,5mm
50 62 005	37,5mm
50 62 007	42,5mm
50 62 009	47,5mm
50 62 011	52,5mm
50 62 013	57,5mm



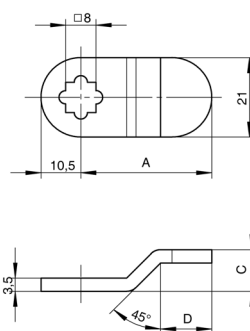
Zeichnungs - Nr. Drawing - No.	Maß A Measure A	Maß B Measure B
50 62 015	28mm	18mm
50 62 017	33mm	23mm
50 62 019	38mm	28mm
50 62 021	43mm	33mm
50 62 023	48mm	38mm
50 62 025	53mm	43mm
50 62 027	58mm	48mm



Zeichnungs - Nr. Drawing - No.	Maß A Measure A	Maß C Measure C	Maß D Measure D	Winkel α Angle α
50 62 043	36,5mm	13mm	15mm	15°
50 62 039	36,5mm	18,5mm	12mm	20°
50 62 056	42mm	8,5mm	10,5mm	22°
50 62 061	42mm	8,5mm	25mm	30°
50 62 035	51mm	13mm	22mm	30°
50 62 033	51,5mm	18mm	20mm	30°
50 62 058	67,5mm	8,5mm	26mm	12°



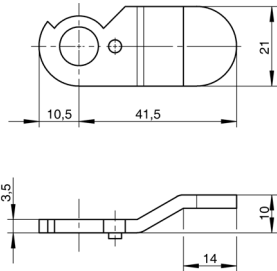
Zeichnungs - Nr. Drawing - No.	Maß A Measure A	Maß C Measure C	Maß D Measure D
50 62 031	29mm	8,5mm	14mm
50 62 029	34,5mm	11mm	13,5mm
50 62 041	39,5mm	11mm	18mm



**Schließhebel für Art. Nr. 1251
und Schließweg-Tabelle**

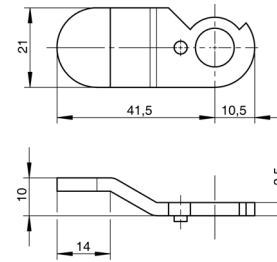
**Levers for Art. No. 1251
and table**

Zeichnungs - Nr. Drawing - No.
50 62 052



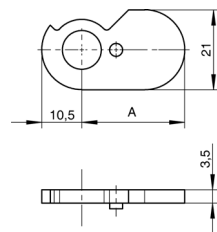
Schließweg /
Cam way
A, C, E, G

Zeichnungs - Nr. Drawing - No.
50 62 057



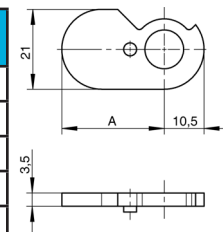
Schließweg /
Cam way
B, D, F, H

Zeichnungs - Nr. Drawing - No.	Maß A Measure A
50 62 045	27mm
50 62 046	32,5mm
50 62 047	37,5mm
50 62 048	42,5mm
50 62 049	47,5mm
50 62 050	52,5mm
50 62 051	57,5mm



Schließweg / Cam way
A, C, E, G

Zeichnungs - Nr. Drawing - No.	Maß A Measure A
50 62 063	27mm
50 62 064	32,5mm
50 62 065	37,5mm
50 62 066	42,5mm
50 62 067	47,5mm
50 62 068	52,5mm
50 62 069	57,5mm



Schließweg / Cam way
B, D, F, H

Schließweg-Tabelle

Table

