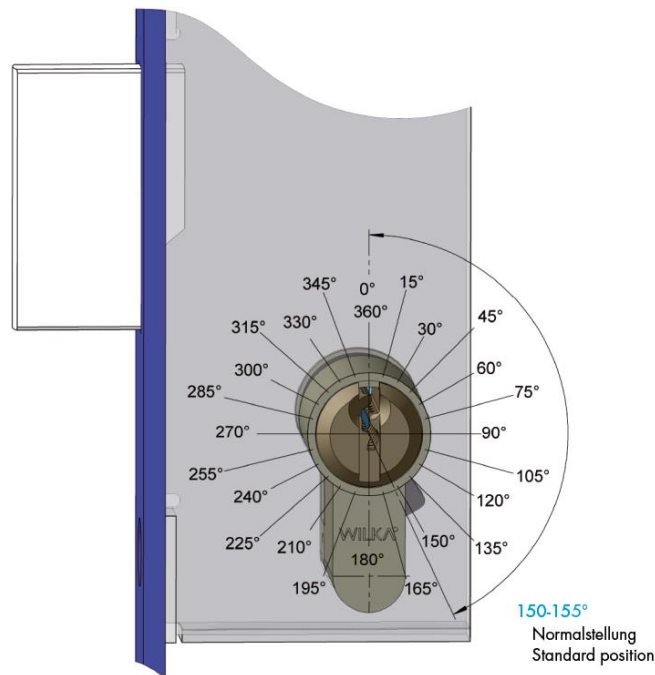


Wichtige Hinweise

Important notes



Standard-Profilzylinder:

- Schließbartstellung 150-155°
- Rechts und links verwendbar

z. B. Artikel 1410, 2110, 3610:

- 8-fach einstellbarer Schließbart (in 45°-Schritten)

Sonderausführungen der Art.-Nr. 1400, 1481, 1488, 3600, 3681, 3688

- Beliebige Schließbartstellung lieferbar
- Bitte Schließbartstellung (Winkelangabe siehe Skizze) und Referenzseite (A oder B) angeben

Standard profile cylinder:

- Cam position 150-155°
- Suitable for right and left

e.g. article 1410, 2110, 3610:

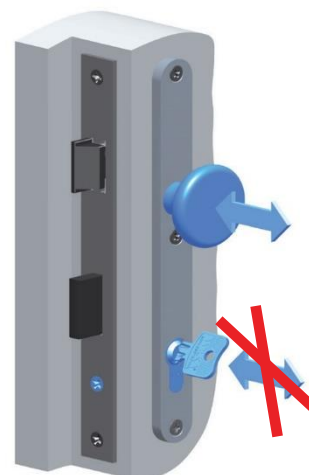
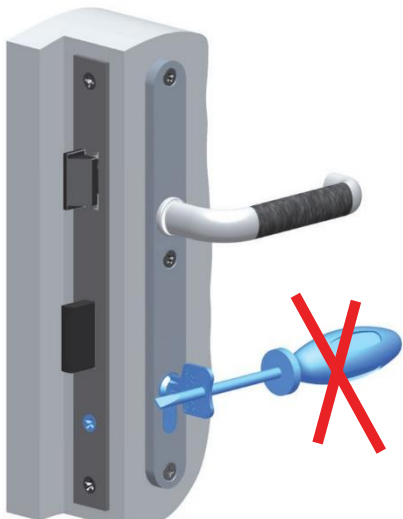
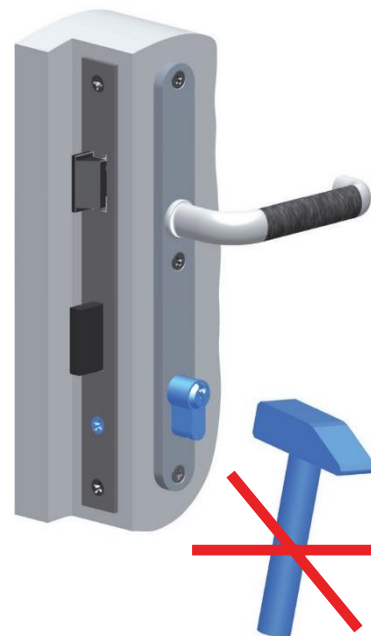
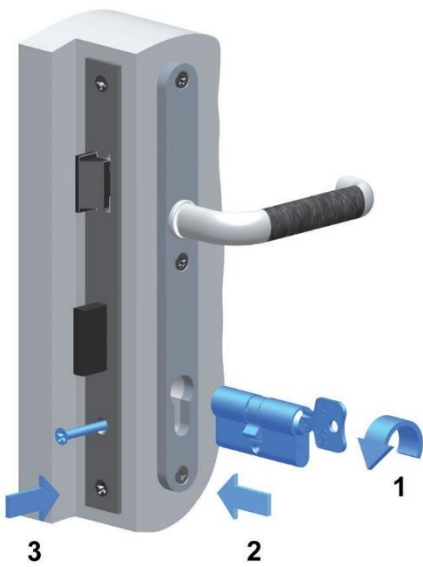
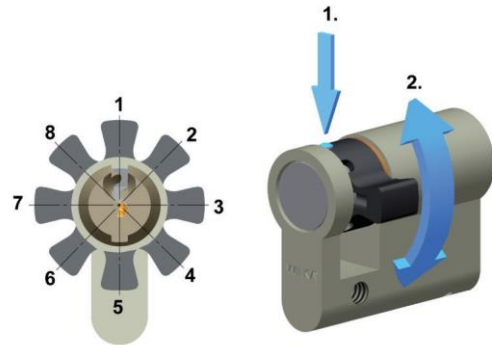
- Adjustable cam for 8 positions (in steps of 45°)

Special designs of Art. No. 1400, 1481, 1488, 3600, 3681, 3688

- Any cam positions available
- Please specify cam position (angle: see drawing) and reference side (A or B)

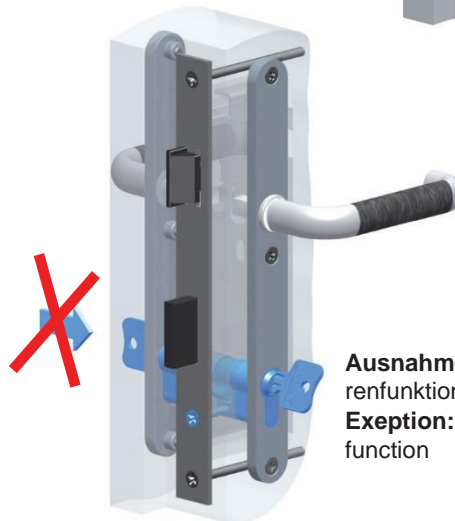
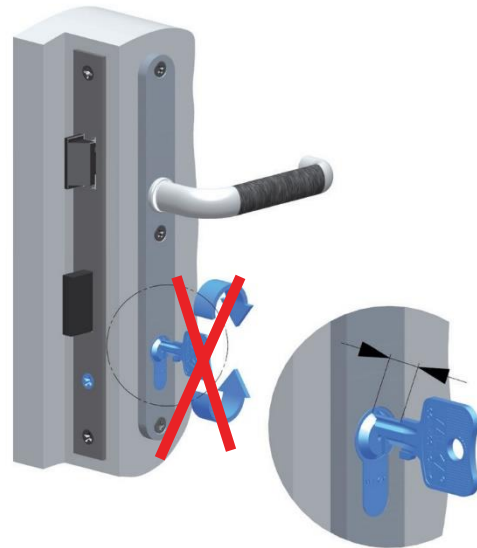
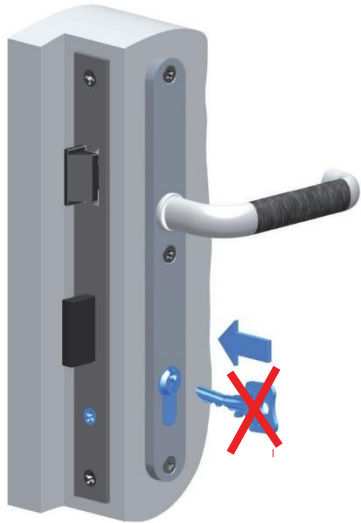
Gebrauchshinweise

Using details



Gebrauchshinweise

Using details



Ausnahme: Not- und Gefahrenfunktion
Exception: emergency exit function

